

NT 600

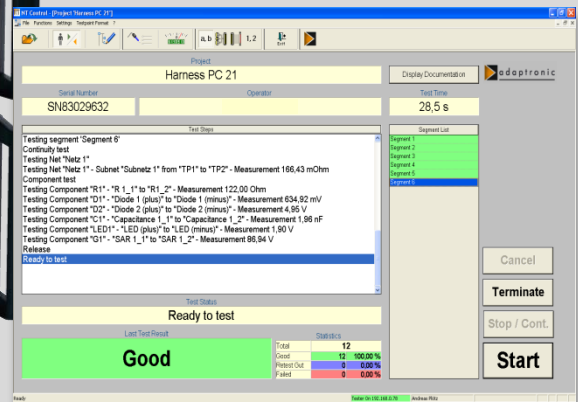
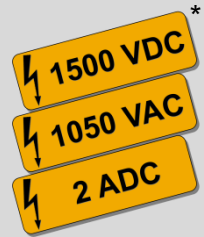


Image: NT 600 with test point unit and options

NT 600 – high flexible – extensive expandable

- ▶ Easy operation via PC with control software NT Control
- ▶ Extensive result reporting to file, to printer or via database connection*
- ▶ Extensive display possibilities and tools for the fault location in the unit under test
- ▶ Up to 1024 test points in the base unit, expandable via additional units up to max. 5120 test points
- ▶ Continuity test, short-circuit test and component test
- Optional:
 - ▶ High current test up to 2 ADC
 - ▶ High voltage test 1500 VDC
 - ▶ Dielectric strength test up to 1050 VAC / 1500 VDC
- ▶ Remote maintenance

Modular, powerful

The NT 600 is the ideal entry-level tester – easy expandable for future test requirements.

- ▶ Low start-up costs
- ▶ Easy expandable*:
 - ▶ Additional measurement electronics (AC/DC)
 - ▶ LCR measurement bridge
 - ▶ Test point expansion via test point units
 - ▶ Four-wire measurement from 100 μ Ohm
 - ▶ Insulation tests up to 10 GOhm
- ▶ Test table support

Ensuring of your product quality by high system availability

The high reliability of the adaptronic test and adapter systems, our quick response service and more than 30 years of experience make a convincing contribution to the quality assurance of your products.

* optional

NT 600 Options

Measurement electronics expansions

to the base equipment MT20 up to 25 VDC / max. 25 mA

► Measurement electronics:

- MT40-40 up to 40 VDC / max. 100 mA
- MT40-250 up to 250 VDC / max. 10 mA
- MT1500DC up to 1500 VDC / max. 2 A
- High voltage insulation test / high current continuity test (optional up to 40 VDC / 10 A pulsed)
- MT2000 up to 1050 VAC
- up to 1500 VDC

Dielectric strength test, max 3 mA or 6 mA

- Internal AC measurement bridge MT_LCR for the test of inductances, capacitances and resistances
- Voltage measurement device MT_EXT for the voltage measurement up to 700 VDC and 500 VAC (max. 400 Hz)
- Four-wire (Kelvin) measurement for measuring low resistances from 1 mOhm or 100 µOhm

Function test

- Stimulus cards
- Stimulus sources
- Test and programming of one-wire devices
- Total integration of camera systems for visual tests
- ProfiNet, LIN-, CAN-, Mod-Bus TCP, other bus systems on request

Elaborate number of interfaces

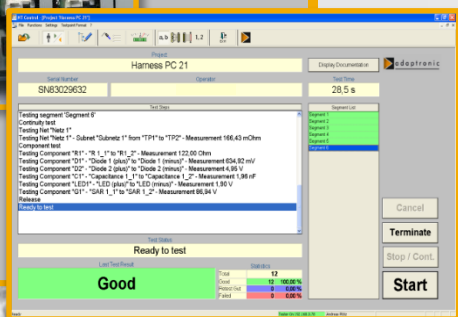
- Digital inputs and outputs 24 V
 - Interface for test point units (standard)
 - Extern Interface (standard)
 - Safety loop (standard)
- etc.

NT Control test and programming software

- Graphic user interface with clear test display
 - Operating buttons, test status, statistics
 - In the error case display as error list or single error
- Editors for net lists, link lists, insulation point lists (prim lists) and component lists, function test editor
- Easy realization of special test procedures
- Comfortable multimeter function

NT Control is part of the delivery!

For further information about the wide-range of features please note the NT Control product information.



Open Wire Probe

- ▶ Intelligent pin number probe
- ▶ Test point display
- ▶ Status display
- ▶ Operation modes automatic and manual

Operating and display options

- ▶ Foot switch for test start
- ▶ Warning lamp for high voltage tests
- ▶ Test result lamp

Temperature and humidity logging

- ▶ Combined temperature and humidity sensor
- ▶ Interface at the NT 600
- ▶ Temperature and humidity available in NT Control

Comprehensive possibilities of interface boards and adapter cables

- ▶ Interface boards for the adaption of the adaptronic interface to existing adapter cable connector systems
- ▶ Adapter cables with adaptronic standard interfaces, open cable ends for the adaption by the client or application specific special adapter cables

Test point units

- ▶ Up to 1024 test points each unit
- ▶ Max. 4 test point units with max. 4096 test points can be operated from a NT 600 (with max. 1024 test points)
- ▶ Positioning of the base unit and the test point units directly side by side or one upon the other

Additional services

- ▶ Training for programming and testing with NT Control and NT 600
- ▶ Calibration service
- ▶ Application specific assistance

