

NT 700-2 NT 700-3

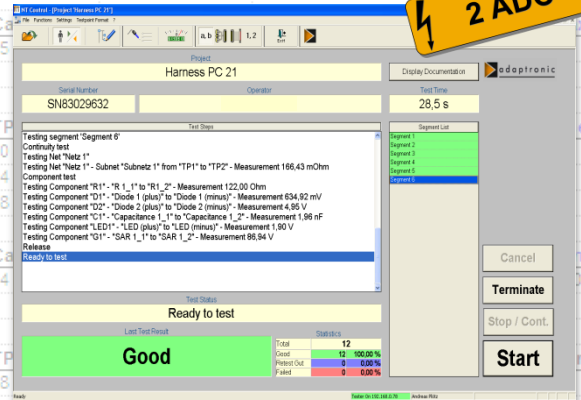
⚡ 3750 VDC
⚡ 2650 VAC
⚡ 2 ADC

NT 700-2 with options



TP 2	Value	Tol.	Tol. +	Tol. -
8	120,00 Ohm	10,0 %	10,0 %	
12	1,00 kOhm	10,0 %	10,0 %	
16	1,00 MOhm	10,0 %	10,0 %	
Cathode	Vf		Tol. +	
32				

Surge Arrestor	TP 1	TP 2	Voltage	Tol. +	Tol. -	Ramp



NT 700-2/-3 – flexible with high generator power

- ▶ Easy operation via PC with control software NT Control
- ▶ Comfortable test program editors
- ▶ Elaborate result report
- ▶ Operating languages selectable
- ▶ **NT 700-2:** test point interfaces at the front side
- ▶ **NT 700-3:** test table variant with test point interfaces at the rear side
- ▶ Up to 1024 test points
- ▶ Continuity test, short circuit test and component test up to 25 VDC
 - ▶ Optional up to 40 VDC or 250 VDC
- ▶ Insulation test up to 1500 VDC
- ▶ Dielectric strength test up to 3750 VDC and 2650 VAC
- ▶ Remote maintenance

Perfect for highest requirements

The NT 700-2 or NT 700-3 is the first choice for applications in the areas:

- ▶ e-mobility (electric or hybrid vehicles)
- ▶ Medical technology
- ▶ Automation technology

Ensuring of your product quality by high system availability

The high reliability of the adaptronic test systems, our quick response service and more than 30 years of experience make a convincing contribution to the quality assurance of your products.

NT 700-3
(front / rear)
with options

