

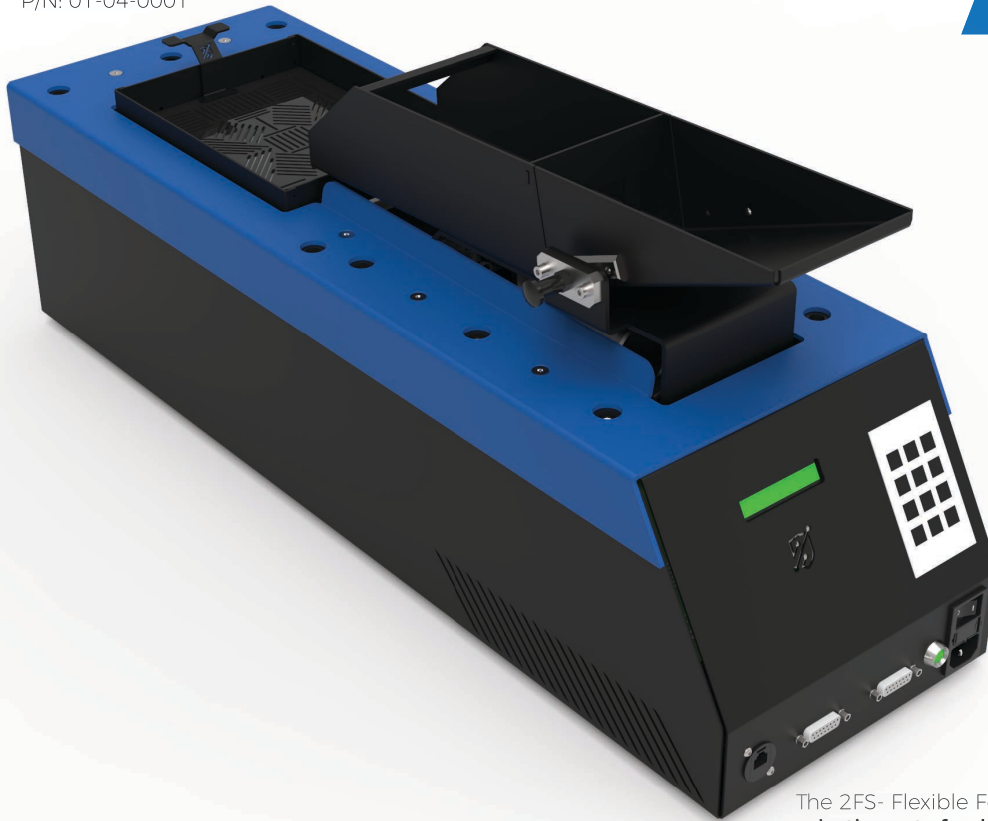
2FS

Flexible Feeding System

P/N: 01-04-0001



StoneShield
ENGINEERING



The 2FS- Flexible Feeding System, is a **low-cost vibration robotic parts feeder**.

It can work in standalone mode or integrated with automation systems.

Compatible with all parts geometry: it can use a blank tray or **specific orientation masks to separate and orientate parts in a specific position**.

The orientation mask and feeding tray replacement is done without tools allowing a quick purge and replacement of components.

Due to its **adjustable backlight and integration with vision systems**, it allows a precise and reliable parts' detection.



Easy Parameter Configuration:

Creation of distinct programs, with adjustable: vibration time; vibration speed; backlight color and intensity



High Connectivity:

Stand-alone mode
Communication mode: RS232, RS485 (Modbus), I/O signals



Precise and Reliable:

Integration with vision systems and custom designed orientation masks



Quick Setup

Quick and tool free replacement of orientation masks and feeding tray



Cost Effective:

High quality, high flexible feeding system with a competitive cost



STONESHIELD - ENGINEERING, LDA

HEADQUARTERS:

RUA ANTÓNIO DE SÁ RODRIGUES, LT 79
6000-038 CASTELO BRANCO
PORTUGAL

OPERATIONS CENTER:

CEI - AV. DO EMPRESÁRIO, N.º1
6000-767 CASTELO BRANCO
PORTUGAL

TEL: +351 272 241 415

EMAIL: INFO@STSHIELD.COM

WEB PAGE: WWW.STSHIELD.COM

YOUTUBE: WWW.YOUTUBE.COM

2FS

Flexible Feeding System



Applications:

Robotic parts feeder;
Parts sorting, orientation and identification.



Technical Features:

- ▶ 2 working modes:
 - Standalone: configurable locally using LCD and keyboard;
 - Integrated: configurable externally, by automation systems.
- ▶ External communication: RS232, RS485 (Modbus) , I/O signals;
- ▶ Simple and intuitive program configuration (just 4 parameters);
- ▶ Program parameters:
 - Vibration time;
 - Vibration speed (from 1 to 10);
 - Backlight color (RGB);
 - Backlight intensity.
- ▶ Program settings saved in database (up to 100 programs);
- ▶ Quick and tool free orientation mask and feeding tray replacement;
- ▶ Orientation mask custom designed according to part;
- ▶ Easy integration with automation systems and vision systems for intelligent part sorting, orientation, identification and picking.

Technical Data:

Vibration platform
(orientation mask):

Length:	200 mm
Width:	150 mm

Dimensions:

Length:	730 mm
Width:	230 mm
Height:	300 mm
Weight:	30 kg

Connections:

Electrical:	230 VAC @ 50 Hz - 1 IEC standard male socket
Interfaces:	Touchscreen, LCD, buzzer, 2x DB9 (RS232 and I/O), 1x RJ45 (RS485)

Options:

Custom Orientation Mask

P/N: 08-04-0001

Integrated LED Backlight RGB)

P/N: 08-04-0002



STONESHIELD - ENGINEERING, LDA

HEADQUARTERS:
RUA ANTÓNIO DE SÁ RODRIGUES, LT 79
6000-038 CASTELO BRANCO
PORTUGAL

OPERATIONS CENTER:
CEI - AV. DO EMPRESÁRIO, N.º1
6000-767 CASTELO BRANCO
PORTUGAL

TEL: +351 272 241 415
EMAIL: INFO@STSHIELD.COM
WEB PAGE: WWW.STSHIELD.COM
YOUTUBE: WWW.YOUTUBE.COM