

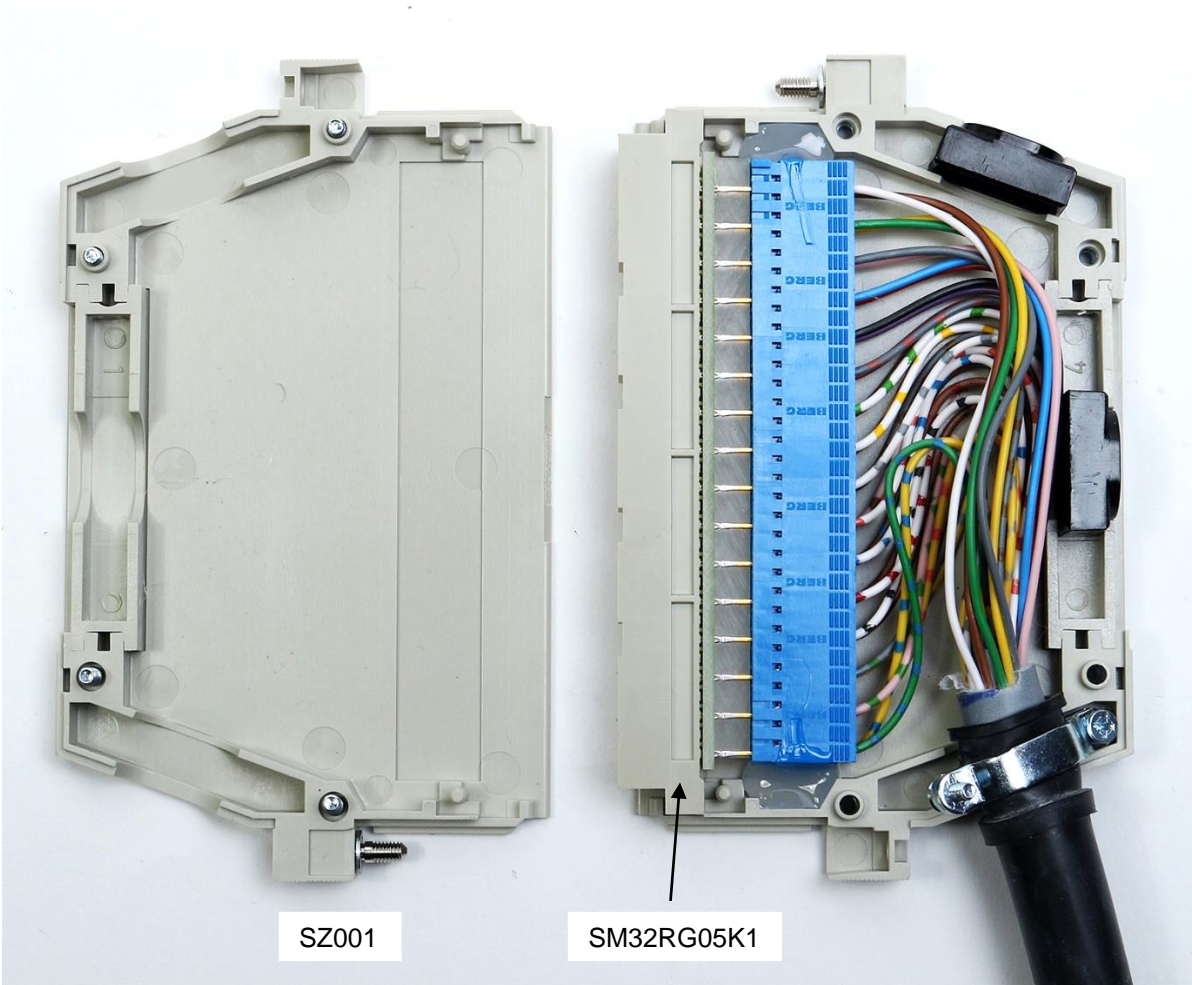


## LRK03205Lxxxx

### Adapterkabel / Adapter Cable

- Rundkabel 32-pol., 2150 VDC max., DIN 41612, M/O
- Verschiedene Längen lieferbar
- Für Isolationsmessungen bis max. 10 GOhm
- Testerseite: DIN 41612 Messerleiste mit Griffgehäuse, Messerleiste bei Verschleiß schnell austauschbar
- Prüflingsseite: offen
- LAPPKABEL UNITRONIC FD P Plus 32 x 0,25 mit PUR/POE-Isolierung, Außendurchmesser 10,5 mm
- Auch für Energieführungsketten
- Elektrisch geprüft nach adaptronic Prüfspezifikation
- *Round cable 32-way, 2150 VDC max., DIN 41612, M/O*
- *Various lengths available*
- *For insulation measurements up to max. 10 GOhm*
- *Tester side: DIN 41612 male connector with housing, quickly replaceable after wear*
- *UUT side: open wires*
- *LAPP UNITRONIC FD P Plus 32 x 0.25 with PUR/POE insulation, outer dimension 10.5 mm*
- *Also for drag chain use*
- *Electrically tested according to adaptronic test specification*

# ADAPTER CABLE

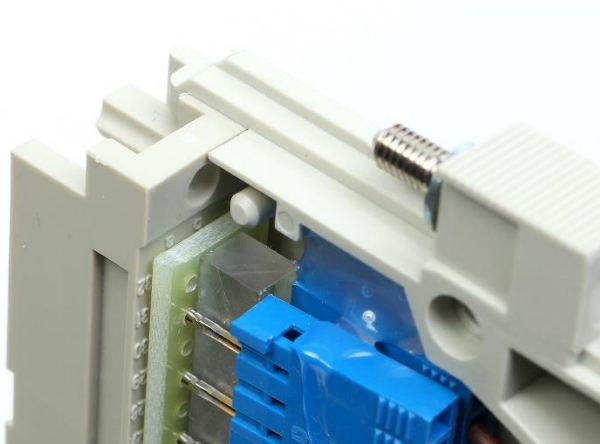


SZ001

SM32RG05K1

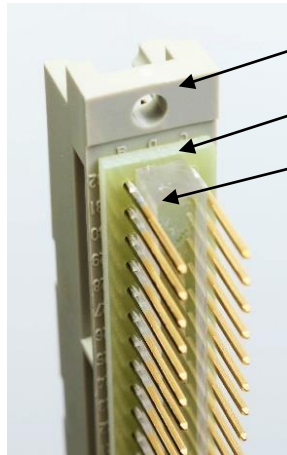
Komponenten des Testsystem-Steckers

Components of the test system connector



Detail 1  
Steckerbaugruppe mit  
angeschlossenen  
Kabeln

Plug assembly group  
with connected wires



Detail 2  
Steckerbaugruppe  
(Beispiel)  
bestehend aus:  
1. Messerleiste  
2. Fixierungsplatte  
3. Abstandhalter

Plug assembly group  
(example)  
consisting of:  
1. Male connector  
2. Fixing plate  
3. Spacer

**Zweipol-Verdrahtung mit RM11 / RM15 / RM16 / RM100 / RM120**

Verdrahtung nach DIN 47100 Tabelle 4  
Messerleiste DIN 41612, 32-polig, Bauform R

**Two-wire wiring with RM11 / RM15 / RM16 / RM100 / RM120**

Wiring according to DIN 47100 Table 4  
Male connector DIN 41612, 32-way, type R

|    | a    |       | b | c    |       |
|----|------|-------|---|------|-------|
| 32 |      |       |   |      |       |
| 31 | TP1  | WH    |   | TP2  | BN    |
| 30 |      |       |   |      |       |
| 29 | TP3  | GN    |   | TP4  | YE    |
| 28 |      |       |   |      |       |
| 27 | TP5  | GY    |   | TP6  | PK    |
| 26 |      |       |   |      |       |
| 25 | TP7  | BU    |   | TP8  | RD    |
| 24 |      |       |   |      |       |
| 23 | TP9  | BK    |   | TP10 | VT    |
| 22 |      |       |   |      |       |
| 21 | TP11 | GY-PK |   | TP12 | RD-BU |
| 20 |      |       |   |      |       |
| 19 | TP13 | WH-GN |   | TP14 | BN-GN |
| 18 |      |       |   |      |       |
| 17 | TP15 | WH-YE |   | TP16 | YE-BN |
| 16 |      |       |   |      |       |
| 15 | TP17 | WH-GY |   | TP18 | GY-BN |
| 14 |      |       |   |      |       |
| 13 | TP19 | WH-PK |   | TP20 | PK-BN |
| 12 |      |       |   |      |       |
| 11 | TP21 | WH-BU |   | TP22 | BN-BU |
| 10 |      |       |   |      |       |
| 9  | TP23 | WH-RD |   | TP24 | BN-RD |
| 8  |      |       |   |      |       |
| 7  | TP25 | WH-BK |   | TP26 | BN-BK |
| 6  |      |       |   |      |       |
| 5  | TP27 | GY-GN |   | TP28 | YE-GY |
| 4  |      |       |   |      |       |
| 3  | TP29 | PK-GN |   | TP30 | YE-PK |
| 2  |      |       |   |      |       |
| 1  | TP31 | GN-BU |   | TP32 | YE-BU |

TP = Test-Punkt

TP = test point

LRK03205Lxxxx