

adaptronic



NT 700 Series

New Modular Test Concept



adaptronic Prüftechnik GmbH
Dörlesberg-Ernsthof
D-97877 Wertheim
Germany



Quality Management System
DIN EN ISO 9001

Phone ++49 (0) 9345 / 930-0
Fax ++49 (0) 9345 / 930-100

E-Mail info@adaptronic.de
Internet www.adaptronic.de

The new NT 700 tester series replaces the single tester types:

- ▶ NT 642
- ▶ NT 643
- ▶ NT 710
- ▶ NT 730
- ▶ NT 742
- ▶ NT 751

The listed types are replaced since 1st of January 2016 and are no longer offered.

The NT 700-1 basic system includes the following components:

- ▶ NT_CPU03 processing unit (**new**)
- ▶ MT20 measurement electronics for low voltage test (max. 25 VDC), including External Interface and safety loop (**new**)
- ▶ Power supply unit
- ▶ Rack with bus for additional measurement electronics



Note: The basic system does not include an expansion module/rack for test point cards.

Optional measurement electronics for integration into the basic rack:

- ▶ MT40-40 (**new** - replaces MT250-40)
- ▶ MT40-250 (**new** - replaces MT250-250)
- ▶ MT1500DC
- ▶ MT2000-3mA (**new** - replaces MT1000AC-3mA, AC/DC with higher voltages)
- ▶ MT2000-6mA (**new** - replaces MT1000AC-5mA, AC/DC with higher voltages)



Depending on the number and types of necessary test point cards and stimulus cards, expansion modules are available in different dimensions:

Expansion modules	Types of test point cards	Max. no. of test point cards
6 RU	PEX04, PEX05	16
3 RU	RM12, RM13, RM16, RM60, RM80, RM100, RM120 (64/4 HP)	16
4 RU TPI/FPI	RM12, RM13, RM16, RM60, RM80, RM100, RM120 (TPI-Version, 80/5 HP)	Depending on interface modules
6 RU	RM10, RM11, RM15 (64/4 HP)	16
7 RU TPI/FPI	RM10 TWIN, RM11, RM15 (TPI-Version, 80/5 HP)	Depending on interface modules
6 RU	RM9 HAN	8

Minimum one expansion module is necessary in a test system, because the basic system does not include an expansion module for test point cards!

Depending on the number and types of racks of a test system, cabinets with different dimensions are offered:

- ▶ Table top housing 9 RU / 600 mm
- ▶ Table top housing 12 RU / 600 mm
- ▶ Table top housing 16 RU / 600 mm

- ▶ Base cabinet 19" / 12 RU / 800 mm
- ▶ Base cabinet 19" / 16 RU / 800 mm
- ▶ Base cabinet 19" / 20 RU / 800 mm
- ▶ Base cabinet 19" / 25 RU / 800 mm
- ▶ Base cabinet 19" / 29 RU / 800 mm
- ▶ Base cabinet 19" / 38 RU / 800 mm
- ▶ Base cabinet 19" / 43 RU / 800 mm



Depth 600 mm for
systems without TPI/FPI

Note: Base cabinets are equipped with rollers

For special applications with higher voltages or currents like dielectric strength tests or PE conductor tests various generator modules are available:

- ▶ C19052, max 5000 VAC, 6000 VDC
ISO measuring optional
- ▶ C19055, max 5000 VAC, 6000 VDC, 500 VA
ISO measuring included
- ▶ RXS56, max 5000 VAC, 6000 VDC, intrinsically safe
- ▶ SPS P1800D protective ground tester
up to 25 A



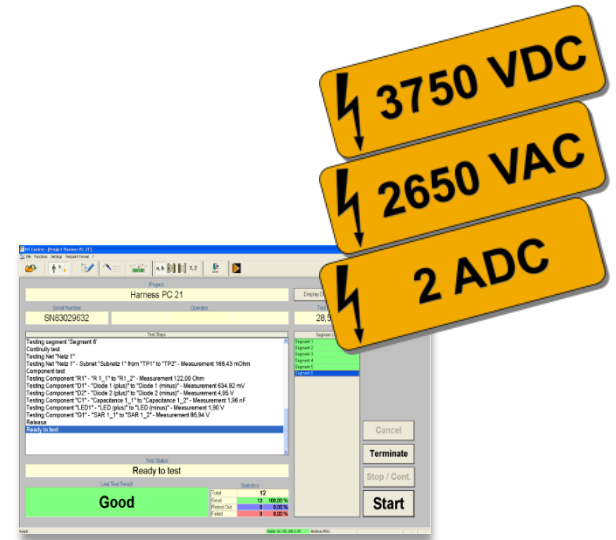
All generators are fully integrated into the adaptronic test system surrounding with NT Control.

The new NT 700 series offers several advantages for the customer:

- ▶ Convenient starting price
- ▶ Pay only for what you need
- ▶ High expandability – test system is growing with new test requirements
- ▶ All other adaptronic features available (Kelvin measurement, function test, customer specific test point interfaces, intelligent adapter cables, test table support, Open Wire Probe...)
- ▶ Security of continuous in-house development of test system hardware and software since over 35 years
- ▶ Predefined configurations with special prices (e.g. NT 700-2 / NT 700-3)

High voltage wiring testers for:

- ▶ Dielectric strength test up to 2650 VAC / 3750 VDC
- ▶ Insulation test up to 1500 VDC
- ▶ Continuity test, short circuit test, component test
- ▶ Max. 1024 test points



NT 700-2 (interfaces at the front)

Measurement electronics and generators:

- ▶ MT20
- ▶ MT1500DC
- ▶ CHROMA 19052

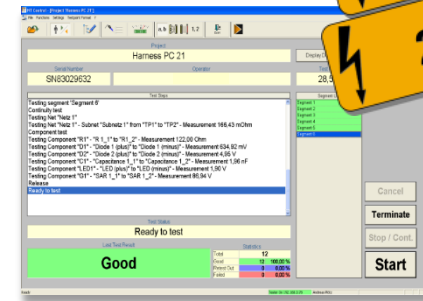


NT 700-3 (interfaces at the rear e.g. for test table applications)



High voltage wiring testers for:

- ▶ Dielectric strength test up to 2650 VAC / 3750 VDC safety current limited
- ▶ Insulation test up to 1500 VDC
- ▶ Continuity test, short circuit test, component test
- ▶ Max. 1024 test points



Measurement electronics and generators:

- ▶ MT20
- ▶ MT1500DC
- ▶ SEFELEC RXS56

adaptronic



NT 700 Series

New Modular Test Concept



adaptronic Prüftechnik GmbH
Dörlesberg-Ernsthof
D-97877 Wertheim
Germany



**Quality Management System
DIN EN ISO 9001**

Phone ++49 (0) 9345 / 930-0
Fax ++49 (0) 9345 / 930-100

E-Mail info@adaptronic.de
Internet www.adaptronic.de