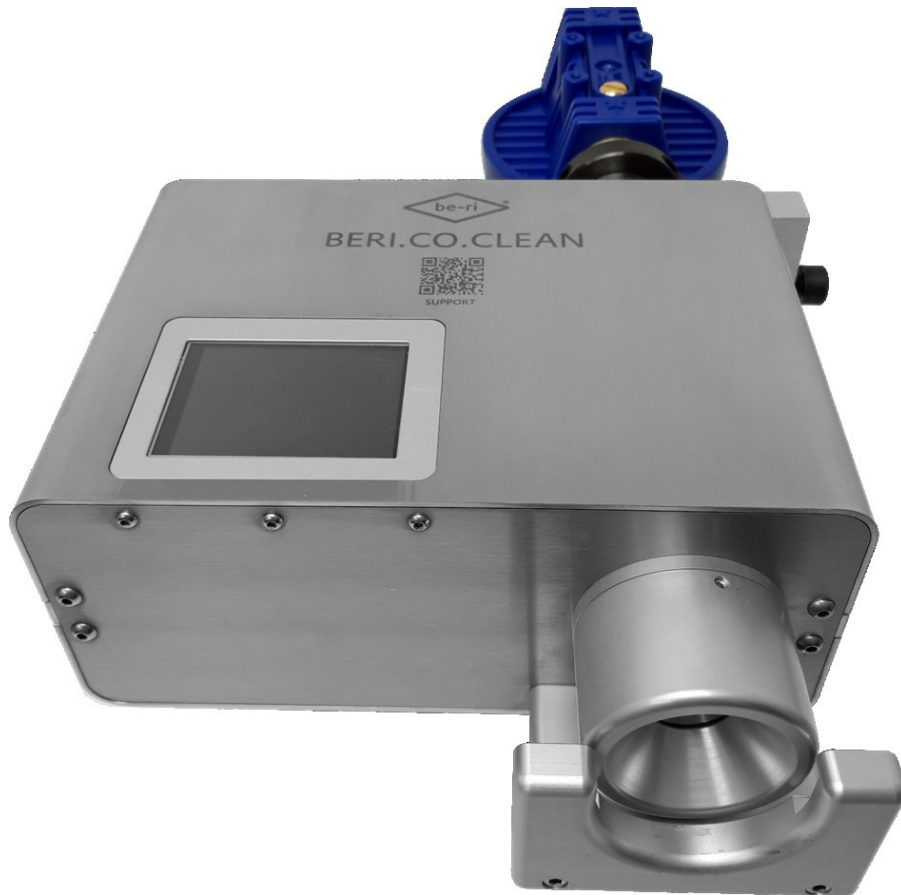

CLEANING DEVICE FOR CABLES



BERI.CO.CLEAN

The electro-pneumatic BERI.CO.CLEAN is designed for cables, wires, catheters, etc. to vacuum off unwanted and troubling particles and adhering dirt such as chips, dust, talc, etc.

The cutting of the wire mesh of coaxial cables causes small micro chips, which should be avoided absolutely. This waste otherwise can lead to future problems like short circuits.

The operation of the BERI.CO.CLEAN is simple: Insert the cable tip into the device and activate the suction.

The desired air flow, the suction time and the delay of the suction can be adjusted. Suction nozzles of different diameters and different filters can be used.

The BERI.CO.CLEAN can be configured according to nozzle configuration and customer requirements. Versions with foot switch or with sensor release, and versions for cables up to Ø 0.75" (19,0 mm) or up to Ø 1.24" (31,5 mm) can be supplied. The stand versions allow the processing of cables up to approx. 10.6" (270 mm) in length. Special dimensions are possible on request.

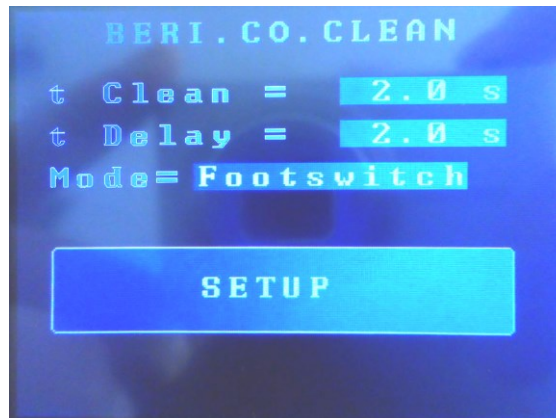


FEINTECHNIK Telefon: +49 . (0)251.96115-0
R.RITTMAYER GMBH Telefax: +49 . (0)251.624 525
Höltenweg 103 E-mail: rittmeier.beri@t-online.de
48155 Münster Web: www.rittmeier-beri.de
Germany

ADVANTAGES AND INNOVATIONS

FUNCTIONS

- Suction device for rod-shaped or tubular materials such as cables, wires, catheters, etc.
- Triggering of the process by foot valve or by optical sensor
- Defined air flow in a closed system
- Extracted particles are filtered and stored safely - no loss to the environment
- Rugged industrial construction



SPECIFICATIONS

- | | |
|------------------------------|------------------------------------|
| - Cable diameter | 0.75" (19,0 mm) or 1.24" (31,5 mm) |
| - Insertion depth (standard) | up to 10.6" (270,0 mm) |
| - Compressed Air | ISO 8573-1 |
| - Operating pressure | 6 - 7 bar |
| - Trigger | optical sensor |

CONNECTION

- | | |
|----------|-----------------------------------|
| - Input | 100 – 240 V / 50 – 60 Hz / 265 mA |
| - Output | 24vDC / 0,5A |

HANDLING

- Inserting of the media to be cleaned manually
- The operation can be selected with a foot switch or sensor
- Using the touch screen extraction time and the beginning of the extraction can be set (in tenths of a sec.)
- "Automatic mode": The air valve opens immediately when triggered by the light barrier and closes immediately after leaving the light barrier.

FILTER

- Washable Filter element made of nylon fabric with a mesh size of 80 microns for fine solids
- Use of additional filters possible

ERGONOMICS

- The unit can be set to optimum working position