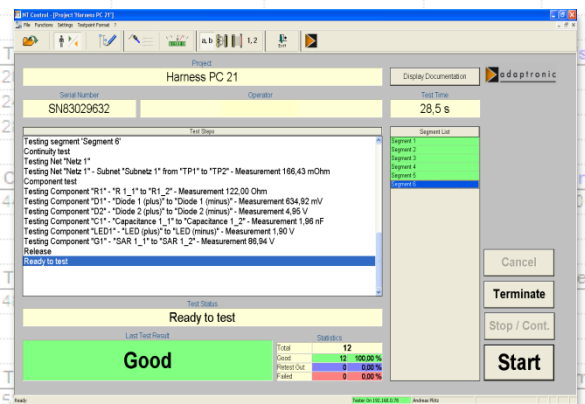


NT 412-2



TP 1	TP 2	Value	Tol. +	Tol. -	Offset
7	8	120,00 Ohm	10,0 %	10,0 %	
11	12	1,00 kOhm	10,0 %	10,0 %	
15	16	1,00 MOhm	10,0 %	10,0 %	
Anode	Cathode	Vf	Tol. +	Tol. -	Vr max.
31	32				40,00 V
Anode	Cathode	Vz	Tol. +	Tol. -	I max.
36	35	5,10 V	10,0 %	10,0 %	

TP 1	TP 2	Value	Tol. +	Tol. -	Offset
19	2				
23	2				
27	2				
Anode	Cathode	Vf	Tol. +	Tol. -	Vr max.
43	4				
Anode	Cathode	Vz	Tol. +	Tol. -	I max.
47	4				
TP 1	TP 2	Value	Tol. +	Tol. -	Offset
51	T				



NT 412-2 – for ambitious wiring tests at a very high number of test points

- ▶ Easy operation via PC with control software NT Control
- ▶ Comfortable test program editors
- ▶ Extensive display possibilities and tools for the fault location in the unit under test
- ▶ Extensive result reporting to file, to printer or via database connection*
- ▶ Up to 32768 test points using max. 16 expansion units
- ▶ Continuity test, short circuit test and component test up to 25 VDC / 25 mA
- ▶ Remote maintenance

Perfect for large test tables for automotive wirings

The NT 412-2 is the first choice for the operation in large test tables.

Features:

- ▶ Distributed expansion units for test points
- ▶ Optimized for high test speed
- ▶ Supports test point gaps for easy expansion
- ▶ Supports the communication with adaptronic adapter control boards via test points
- ▶ Optional host computer connection for the supply of test programs and for the transmission of test data and test results

Ensuring of your product quality by high system availability

The high reliability of the adaptronic test systems, our quick response service and more than 30 years of experience make a convincing contribution to the quality assurance of your products.

* optional

NT 412-2

Test program generation and testing with NT Control:

With the user friendly software NT Control it is comfortable to generate, edit and to manage test programs as well, as to carry out tests.

The data transfer between a PC with NT Control and a NT 412-2 takes place via network.

NT Control is necessary for the operation of the NT 412-2 and part of the delivery. NT Control can be run on a PC* with the operating system Microsoft Windows® 7 Pro up to Windows® 10 Pro.



Technical features

Test points max. 32768 (in max. 16 expansion units with up to 2048 test points each)

Continuity test, short circuit test and component test (DC)

Test voltage / test current max. 25 V / 25 mA

Threshold continuity test 1 Ohm – 1 kOhm

Threshold short circuit test 20 kOhm – 1 MOhm

Component test
Resistors: 1 Ohm – 1 MOhm
Capacitors: 10 nF – 20 mF
Diodes, Zener diodes, LEDs

General

Power supply 90 – 240 VAC (50 – 60 Hz)

Interfaces
3 x I/O, digital 24 V (EXT_INT) and 8 x I/O, digital 24 V (USER_PORT)
Serial interface RS232 / USB 2.0
Network
CAN interface (optical link test box OLT 880)
MEP interface (magnetic single wire test)
Pin number probe, temperature and humidity sensor
4 x PEX-E interface for the connection of expansion test units
IAT interface (intelligent adapter technology / optional)

Installation The NT 412-2 can be installed in standing or lying position (optional: handles and mounting devices)

Dimensions (W x H x D) 136 mm x 265 mm x 330 mm (without add-on components), open frame design for integration into test tables

Scope of delivery NT 412-2, main cable, pin number probe, data medium with NT Control and documentation in PDF format

© Copyright 2017, adaptronic Prüftechnik GmbH. All rights reserved. All mentioned features and functions are subjects to change.
This document is only for information. Images contain options. adaptronic is a word-brand of adaptronic Prüftechnik GmbH.
Mentioned brands and trademarks are property of the respective brand owners.

* PC not included in the standard scope of delivery.