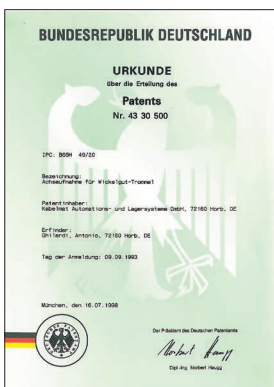


Cable drum storage and unwinding system



Technische Änderungen vorbehalten. Stand 02/2019

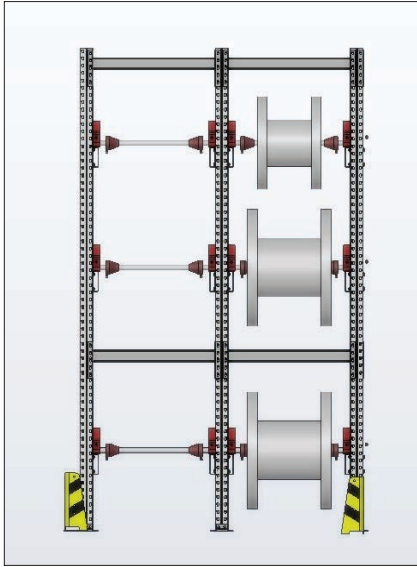


Extract from the patent specification:

“Axle holder for the material drum with a bearing shell for the bearing of one end of the drum axle, whereby the bearing shell is lined with a material which has on the bearing surface facing to the axle an elevation which is subject to elastic deformation and the edges of which are rounded. Thus load controlled braking of the material drum during pay-off is achieved and unwanted coasting down of the material drum is avoided. Handling and safety are, moreover, considerably improved by an additional rollout safety device, an inclined roll-in ramp and as dislodging safety device.

In case of ready-to-pay-off-storing of cable drums it must be made sure that the drums are accepted safely and cannot dislodge due to a rotary movement or due to unbalance during pay-off.

Cable drum storage and unwinding system

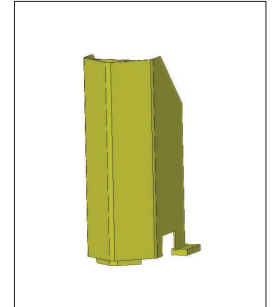


Frame	Part No.
Height 2200 mm	85300073
Height 2500 mm	85300074
Height 2700 mm	85300075
Height 3000 mm	85300076
Height 3300 mm	85300077
Height 3600 mm	85300078
Height 3800 mm	85300079
Height 4100 mm	85300080
Height 4400 mm	85300081
Height 4700 mm	85300082
Height 5200 mm	85300083
Height 5500 mm	85300084
Height 5800 mm	85300085
Height 6000 mm	85300086

Accessoires	Part No.
Floor anchors (4 pcs. per frame)	85300097
Collision guard, corner (2 per frame)	85300099
Collision guard, front for drum Ø 900mm	85300098
Collision guard, front for drum Ø 800mm	85300115



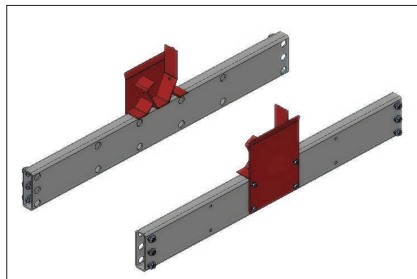
Collision guard, corner



Collision guard, front

Crossbar	Part No.
870 mm up to Ø 900 mm	85300090
1170 mm up to Ø 1400 mm	85300091
1370 mm up to Ø 1600 mm	85300092
1570 mm up to Ø 2000 mm	85300093

Necessary crossbar		
Height 2200 mm	1 front, 1 back	Loading capacity 3000 kg
Height 2500 - 4100 mm	2 front, 2 back	Loading capacity 3000 kg
Height 4400 - 5200 mm	3 front, 3 back	Loading capacity 4000 kg
Height 5500 - 6000 mm	4 front, 4 back	Loading capacity 5200 kg

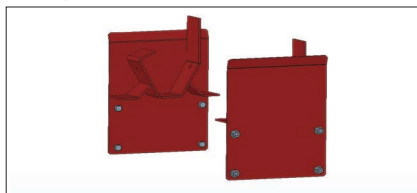


Pair of axle holders, excl. brake pads (3 Ps.) for single drum allocation

Axle holders (pair) with retaining tubes excl. brake pads	Part No.
LAGROL 1050mm, 2000 kg incl. retaining tubes - 3 Ps. For single drum allocation	85300100
LAGROL 1050, 2000 kg incl. retaining tubes - 5 Ps. For double drum allocation max. drum Ø600mm	85300105



Brake pad for Ø34mm axle



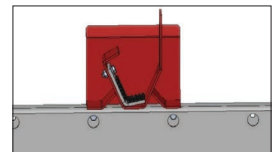
Pair of axle shells, excl. brake pads

Axle shells (pair) excl. brake pads	Part No.
LAGROL Pair of axle shells excl. brake pads, without retaining tubes	85300104

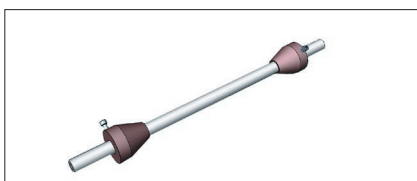


Brake pad for Ø60mm axle

Brake pads for axle holders/ shells	Part No.
Brake pads (2 left, 2 right) when using drum axle Ø34mm	85300103
Brake pads (1 left, 1 right) when using drum axle Ø60mm	85300113



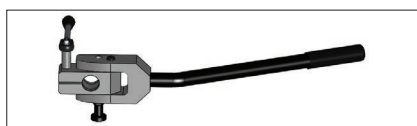
Axle shell incl brake pad



Drum axle incl. 2 centering cones

Drum axle incl. 2 centering cones	Part No.
Ø 34 - 840 mm	Loading capacity 1000 kg 85008010
Ø 34 - 1140 mm	Loading capacity 700 kg 85008020
Ø 60 - 1140 mm	Loading capacity 1700 kg 85008030
Ø 60 - 1340 mm	Loading capacity 1800 kg 85008040

Special axles upon request



Clamping tool for cones

Clamping tool for cones	Part No.
Clamping tool for cones with axle-Ø 34 mm	85300108
Clamping tool for cones with axle-Ø 60 mm	85300109



Drum axle with driving pin

Drum axle incl. driving pin	Part No.
Note: For drums, whose bores are provided with a steel insert, we recommend to use our special drum axles with driving pin	
Ø 60 - 1140 mm	Loading capacity 2000 kg 85300114
Ø 60 - 1340 mm	Loading capacity 2000 kg 85300110

Cable drum storage and unwinding system

This drum storage and pay-off rack is ideal for the use in a production line along with the motorized take-ups such as UMROL, MOTROL or AUTOCUT. The solid construction with special and patented axle and / or drum holders and the fact that take-up and storage system are well-suited to each other make this system ideal for the above mentioned range of application.



Example: LAGROL® with drums in succession

Each **LAGROL®** shelf section consists of two frames in a certain height, the required crossbars offering a certain sections loading capacity as well as of axles and axle holders. For each further shelf section only one further frame is required. All these single components may be combined.

The heavy-load drum bearing and the unwinding system **ABROL** are designed for feeding material to a Kabelmat winding and cutting machine. This system can be used as single feeding system as well as with additional attachable units.

The drum is carried by means of a consistent axle which is centered by two cylindrical cones.

The holding fixtures for the axles are equipped with brake linings for a quieter unwinding from the drum and a reduced follow-up movement.

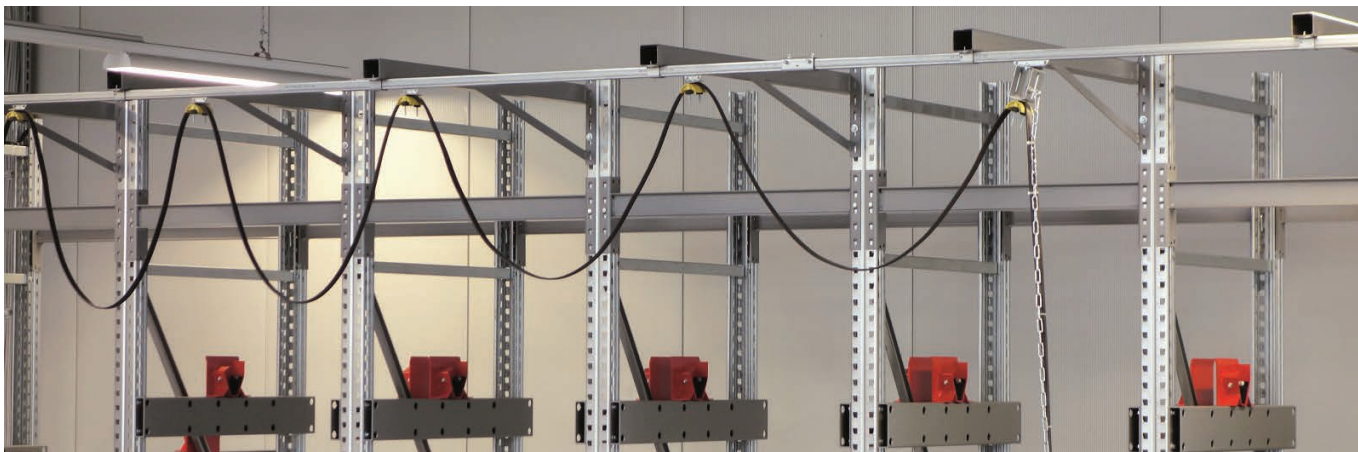


Example: Heavy-load drum bearing and unwinding system combined with LAGROL

Technical details ABROL

Drum-Ø	400 - 2200 mm
Drum weight	max. 5000 kg
Drum width	max. 1450 mm
Base unit H x W x T	3200 x 2320 x 2140 mm
Extension unit H x W x T	3200 x 2160 x 2140 mm

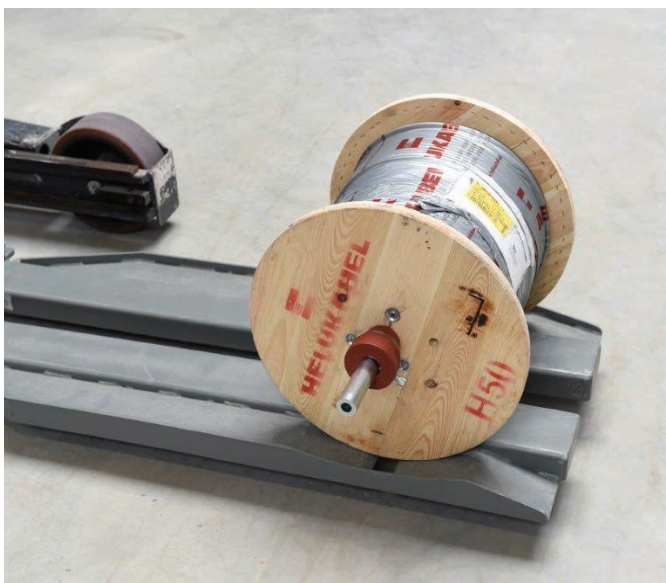
Cable drum storage and unwinding system



Kabelwagensystem für die Regalmontage

Basic equipment:

- U-profile rail with holder for rack mounting
- Cable trolley with clamping device for flat cables
- Buffer for cable carrier left / right
- Discharging terminal
- Stopper
- Flat cable with plug to supply the machine with power



TROMPLAT Transport and loading accessory

This transport and loading accessory consists of two plat forms (extensions) which are put on the forks levers. By changing these accessories from the right to the left and vice versa they can either be used for small drums as well as for bigger ones.