

Cable drum placement platform for lifting equipment

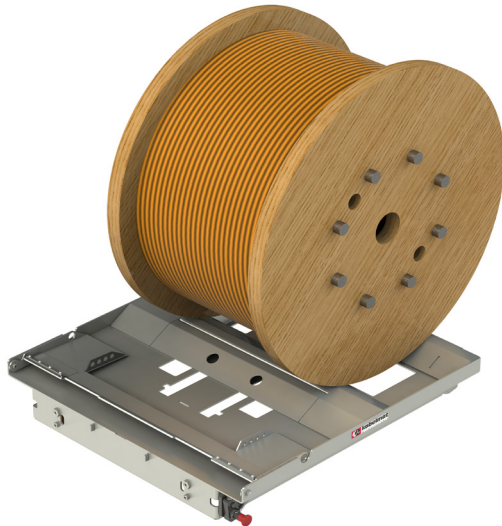


Fig. 1: TROMSTOP with drum Ø800 mm (sample)

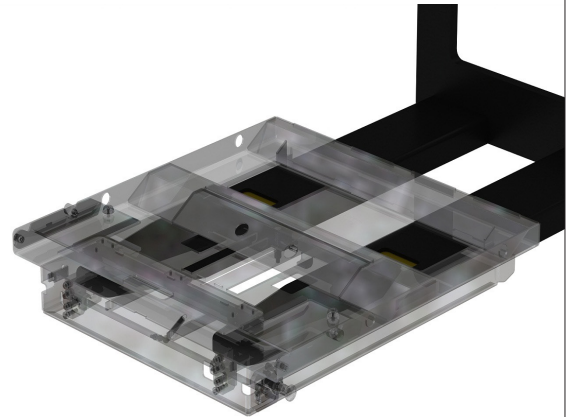


Fig. 2: TROMSTOP example of use

This cable drum placement platform enables the time-saving and safe transportation of cable drums. With it, placing drums on racks is simple. The placement platform is suitable for almost all lifting equipment.

Operating principle:

The tines of the lifting equipment are driven in beneath the placement platform. As soon as the tines have reached the end of the platform, a locking pin closes beneath the platform - the platform is thereby firmly secured. The drums to be transported can now be rolled on via fold-out loading ramps. Predefined centring mechanisms ensure stable mooring of the drums, which corresponds with the load centre of the lifting equipment. Once the drums have been rolled on, the width-adjustable loading ramps are folded in and transportation can begin.

TROMSTOP		Part No.	87000313
Drum specifications:		Technical Data:	
Drum-ø	400-1000 mm (acc. to DIN/KTG)	L x W x H	788 x 710 x 135 mm
Drum weight	max. 900 kg	Weight	approx. 45 kg
		Surface	zinc galvanised

Lifting equipment requirements (fork tines):	
Fork tine format	open
Fork outside spacing	min. 540 - max. 580 mm
Fork tine height (lowered)	max. 85 mm
Fork tine length	approx. 1150 mm
Fork tine width	170 - 185 mm
Load centre distance for drums Ø 710 - 1000 mm (max. weight 900 kg) for drums Ø 400 - 630 mm (max. weight 250 kg)	approx. 600 mm approx. 890 mm
Tine thickness at the fork tine tip	max. 35 mm
Sheet thickness at the fork tine tip	max. 6 mm



Fig. 3: TROMSTOP, fold-out loading ramps

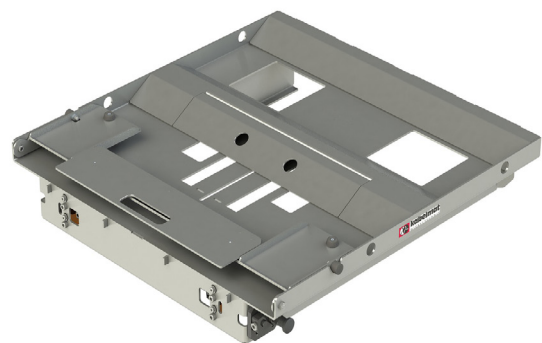


Fig. 4: TROMSTOP, fold-in loading ramps