

DATASHEET

STCS

VMir+



Reference of the product
14-01-0032

Technology
 Infrared

> Media for this machine

The STCS-VMir+ is a heat shrink system, based on infrared technology. It's designed for workbench applications and can process several parts at the same time.

The same machine can be used on several applications, since it's equipped with a fast exchangeable shrinking chamber system.

The chambers are designed according with the application specifications, making them ideal for special applications.

Based on the standard STCS-VMir, the main difference is on the shrinking chamber dimension: 225mm x 100mm.



Fast changeable shrinking chamber



USB and Ethernet sockets for network communication



Bigger shrinking chamber comparing to standard STCS-VMir: 225mm x 100mm



New and improved interface based on Touchscreen technology, that allows network communication

Technical Data

WORKING TEMPERATURE

Min - Max [°C] / [°F] 250-500 / 482-932

SHRINKING TIME

Min - Max [s] 1-100

MEASUREMENTS

Width; Length; Height [mm] / [in] 580; 540; 430 / 22.8; 21.3; 16.9

Weight [kg] / [lbs] 42 / 92.6

POWER SUPPLY/CONSUMPTION

Supply 230 [V] @ 50Hz

Consumption 500 [mA] to 14 [A] (Max.3200W)

PNEUMATIC

Supply Quick Hold Socket Ø8 [mm]

Supply Pressure Min: 5bar; Max: 7bar; Rec: 6bar

CONNECTIONS

Barcode Reader USB

Temperature Sensor Type K Thermocouple

Power Line 1 IEC Standard Male Socket

Programming Touchscreen

Interface Touchscreen, Buzzer and LED

SHRINKING CHAMBER

Shrinking Chamber [mm] / [in] 100 x 225 x 54 / 3.9 x 8.9 x 2.1

Min-Max Tube Ø [mm] / [in] 0-45 / 0-1.8

Min-Max Tube Length [mm] / [in] 0-200 / 0-7.9

Min-Max Cable Ø [mm] / [in] 0-45 / 0-1.8

Min-Max Cable Length [mm] / [in] -

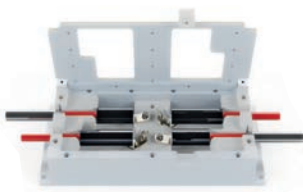
CALIBRATION

Calibration Probe ref.: 26-33-0001

Features

- Adjustable parameters: process temperature, shrinking time, cooling time etc;
- Easy and fast replaceable shrinking chamber;
- Two different operating modes: M1 with temperature and shrinking time control; and M2 mode with pre-programmed references [999 in total];
- Pre-programming of references using a PC with STCS-RCT software (reads Excel™ files) or a USB stick;
- Automatic selection of references using a barcode reader or manually on the Touchscreen;
- Easy firmware upgrade using a USB stick;
- Use of labels for each shrinking time inside a reference;
- Built-in cooling system;
- Manual and automatic calibration;
- Programming mode password protected;
- Special maintenance mode for hardware debug;
- External temperature probe connection for temperature reading and offset adjustment;
- Automatic cool down cycle to extend the life of components;
- Partial and global cycle counter;
- Communication with ultrasonic welding machines;
- Working time counter;
- Network communication;
- Interchangeable system language including: English, Portuguese, French and Spanish (others on demand).

Options



- **Custom shrinking chamber**
Ref: 27-28-0001



- **Dual fixture**
Ref: 27-28-0003